

ANNUAL REPORT

2019/2020



Meals on Wheels Community Services

NPO Registration No: 002-707
PBO Registration No: 130002174

NORTHERN CONFERENCE OF SOUTH AFRICA



MOWCS SOUTH AFRICA

VISION STATEMENT

A Hunger Free South Africa

MISSION STATEMENT

Transforming Lives through Charity in Motion

MOWCS NORTHERN CONFERENCE SA

VISION STATEMENT

Ministering compassion to Communities in harmony with the method of Jesus Christ.

MISSION STATEMENT

Committed to motivate, equip and mobilize the frontline teams to unconditionally meet specific needs of Communities which will promote a trust relationship between the Teams and the Communities.



MOWCS Northern Conference SA Annual General Meeting 2019/2020

NPO Registration No: 002-707

PBO Registration No: 130002174

VAT No: 417 011 8733



A Community Service of the Seventh-Day Adventist Church



Welcome to Meals on Wheels 2019/20 AGM

It is with pleasure that we can report that Meals on Wheels Community Services NCSA had a good and productive year in 2019. With the financial support of MOWCS National Office, the Northern Conference of South Africa, and our many monthly benefactors and the successful feeding programs of our affiliates, MOWCS NCSA has continued to grow in strength.



The following were highlights during 2019.

1. Our sponsored vegetable garden in Polokwane
2. A major donation the NCSA Area Office received from the Nell deceased estate.
3. Turnaround of Magnolia Haven Retirees facilities in Pretoria.
4. Dedicated Affiliates and an increase in meal delivery.

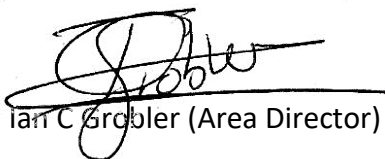
On the 5th of April 2019, the ground-breaking ceremony for our first Vegetable tunnel took place. This was done in partnership with two main sponsors, Mr. Clint Montgomery initiator of a program called 'Farming Against Hunger' and Executive Head, Mr. Eben Lingerfelder of Curro Heuwelkruin who provided us with the space to erect the tunnel on Curro's property. The program is successfully running and providing vegetables to the local affiliates and other beneficiary groups.

Magnolia Housing for retirees, situated in Pretoria, had serious financial struggles and needed crucial restructuring and a turnaround strategy. We took charge of operations and successfully turned it around.

Our greatest success stories are those of our NCSA affiliates. They are making the impact, changing the lives of thousands and delivering millions of meals annually. They are the ones who are really making the difference. When sacrifice is discussed in committee meetings, they are busy putting it to practice, showing what it is really about. Some have exceeded themselves. There are some who are struggling, but still continue to give everything they have. This is what Meals on Wheels Community Services is all about. They are the ones, Transforming Lives Through Charity in Motion, working 24/7 towards a Hunger Free South Africa.

Our greatest supporter and the Giver of all the benefits and successes we have experienced is our Father in Heaven. He is a personal God, and has never disappointed us, no matter how bleak a situation seemed to be. To Him we give all the honor and Glory.

Yours Sincerely,



Ian C Grobler (Area Director)

Governance

Meals on Wheels Community Services Northern Conference of South Africa, is a welfare service owned and operated by the Seventh-day Adventist Church, Northern Conference of South Africa, and is registered with the NPO Directorate of the Department of Social Development, NPO Registration No: 002-707. We are governed by our government-approved Constitution.



social development

Department:
Social Development
REPUBLIC OF SOUTH AFRICA



Constitution

MOWCS NCSA operates in the Gauteng, North West and Limpopo provinces of South Africa, supporting a network of Affiliates and Projects linked to, and in most instances operating from the local Seventh-day Adventist church premises. Meals are delivered to senior citizens and others who are poor and home bound, as well as being served at various service or satellite points. The majority by far of those providing these services are volunteers, some without any remuneration, and others receiving stipends as a token of appreciation for the contribution they make to this ministry, such as preparing and cooking the meals which are distributed to the hungry in our communities. At the Meals on Wheels Service Centres, activities are also arranged to assist in promoting an active and quality life for our senior citizens.

Meals on Wheels is a ministry of the Seventh-day Adventist Church, kindly funded by the public, MOWCS SA, local church congregations, income generating activities and companies in our areas of operation.

Governing Body

Members of the Management Committee

2019/2020

M du Plessis	Chairperson	President – NCSA
IC Grobler	Secretary	Area Director – MOWCS NCSA
Ms CJ Crow	Treasurer	Snr Accountant – MOWCS NCSA
Ms C Moonsamy	Member	Legal / Ethics
Ms W Martin	Member	Human Resources
E Bhebe	Member	MOWCS SA
PS du Plessis	Member	NCDT Director
T Neerings	Member	CFO - NCSA
G Blignaut	Member	Auditor - NCSA
IW Kallis	Member	Secretariat
Ms AH Coetzee	Invitee	Recording Secretary
G Naidoo	Ex-Officio	MOWCS SA

Management Committees

2019/2020

23 May 2019

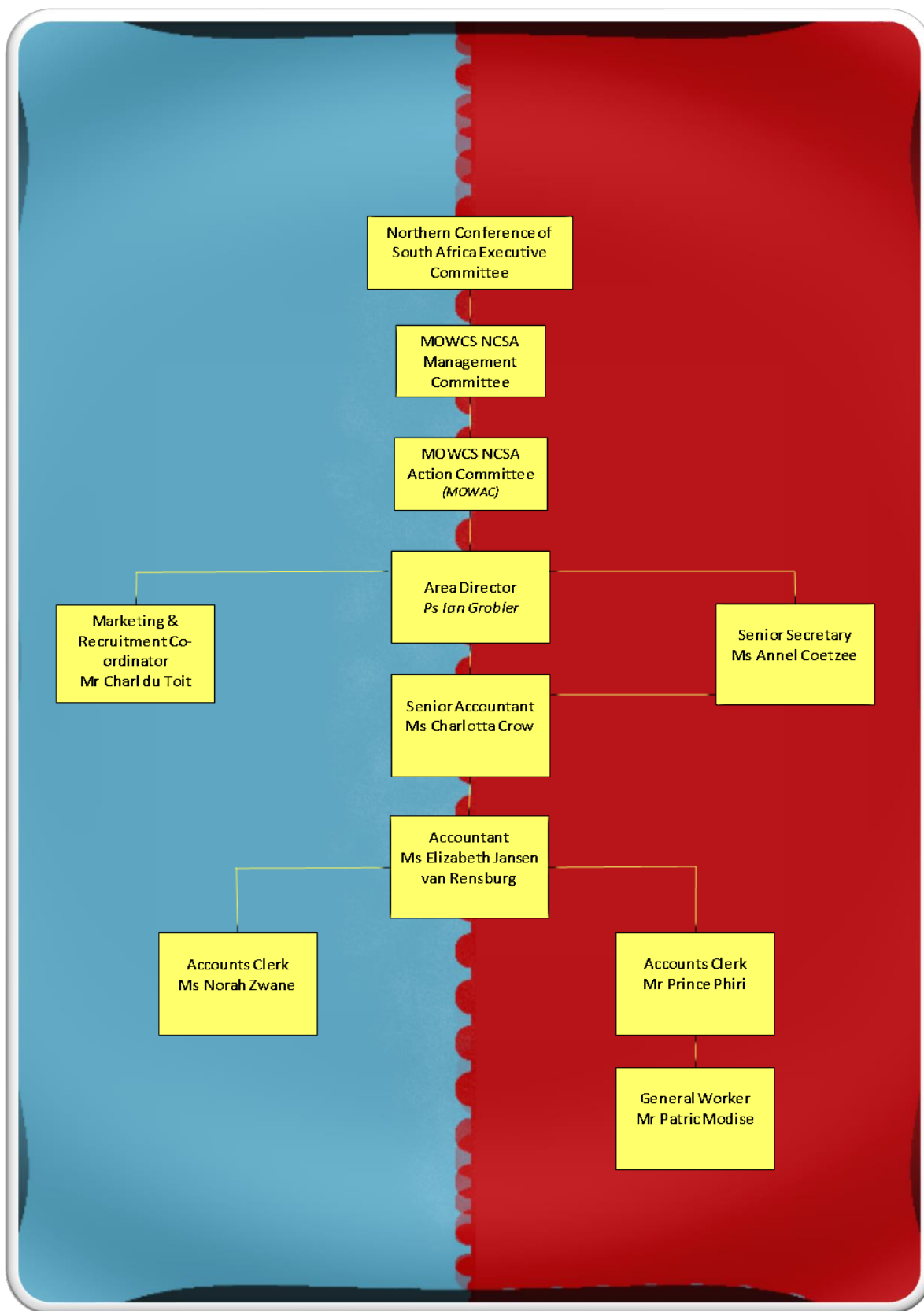
22 Augustus 2019

24 October 2019

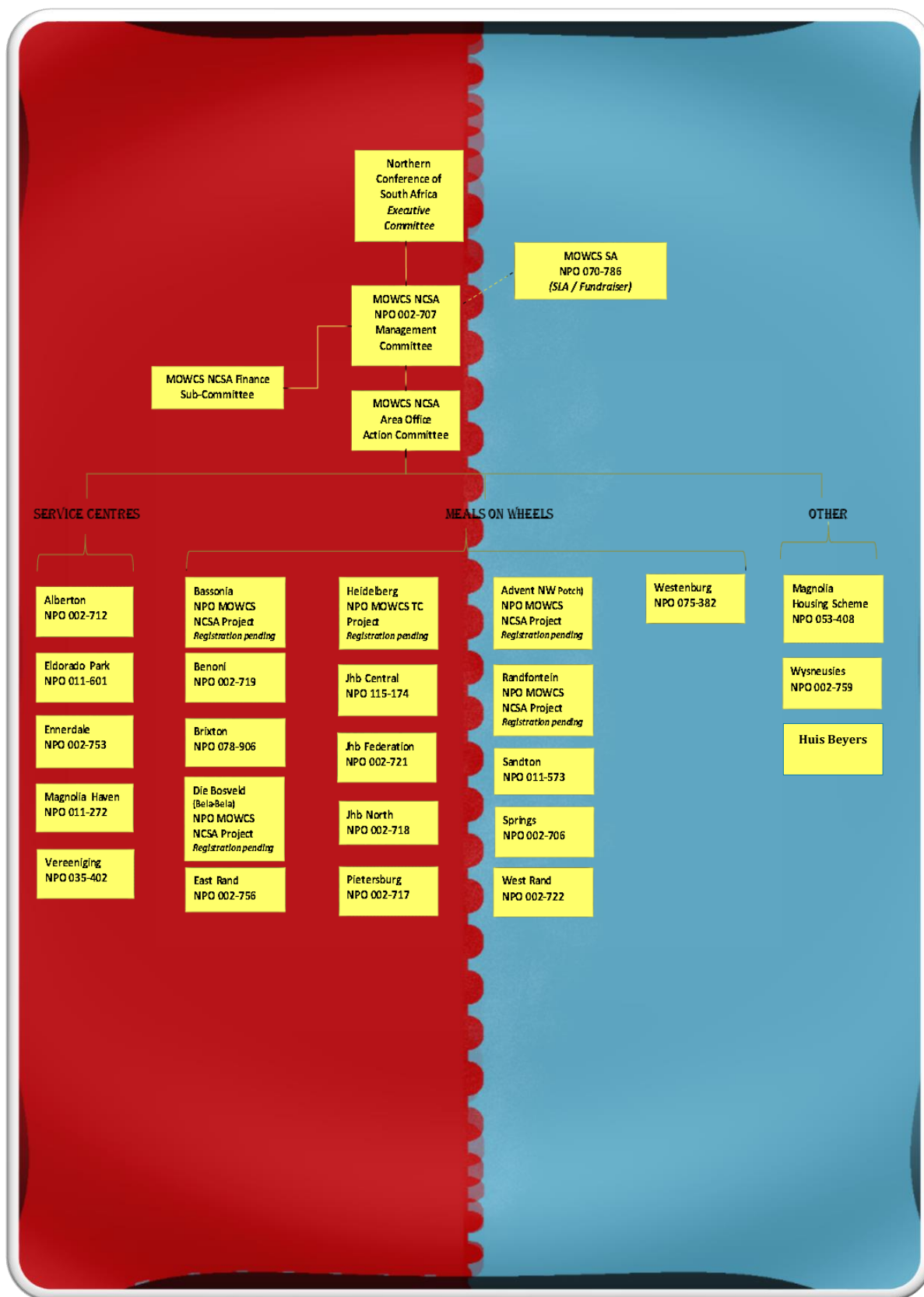
Annual General Meeting

29 October 2020

MOWCS NCSA – Organizational Organogram



MOWCS NCSA – Operational Organogram



Human Resources

Branch Leadership Turnover

Name: Hilda Mostert

Date Retired: 30/09/2019

Portfolio: MOW Leader - Benoni MOW

Years Service (Interrupted): 7 Years 11 months



New Management at Affiliates

Name: Zwelakhe Lamula

Date Started: 01/09/2019

Portfolio: MOW Leader - JHB Federation MOW



Name: Charlotte Vorster

Date Started: 01/10/2019

Portfolio: MOW Leader - Benoni MOW



Staff Demographics:

Position	Gender	Race	
Area Director	Male	White	
Senior Accountant	Female	White	
Accountant	Female	White	
Senior Secretary	Female	White	
Accounts Clerk / Receptionist	Female	Black	
Marketing	Male	White	
Accounts Clerk	Male	Black	
General Worker	Male	Black	



LEFT TO RIGHT

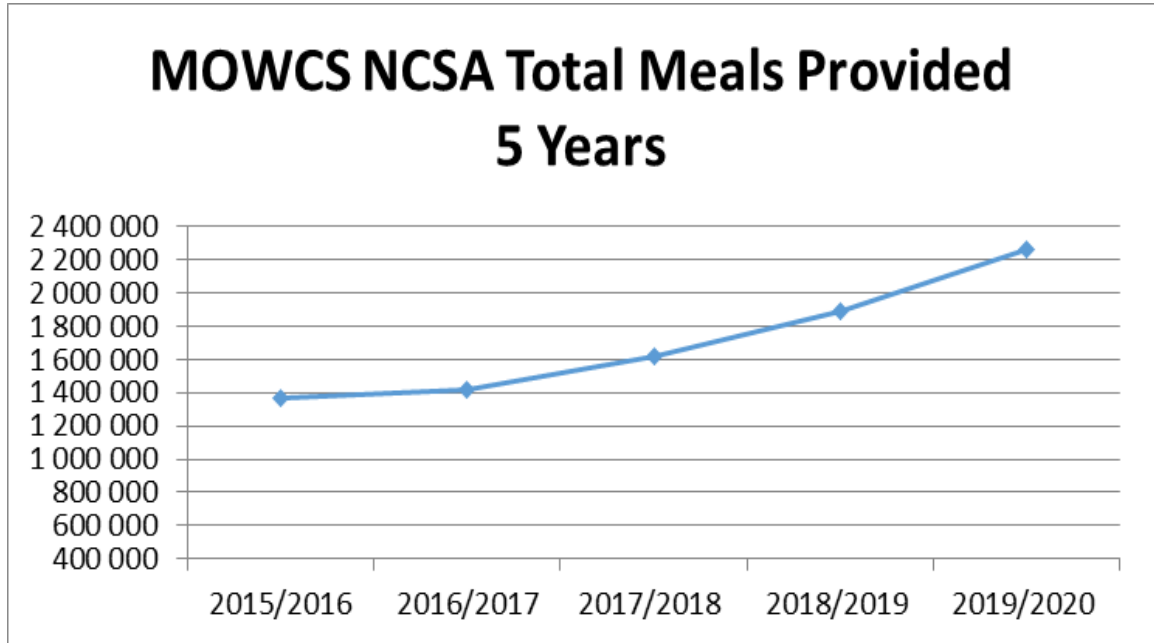
BACK:

Charl du Toit – Marketing
Charlotta Crow – Senior Accountant
Ian Grobler – Area Director
Annel Coetzee – Senior Secretary
Prince Phiri – Accounts Clerk

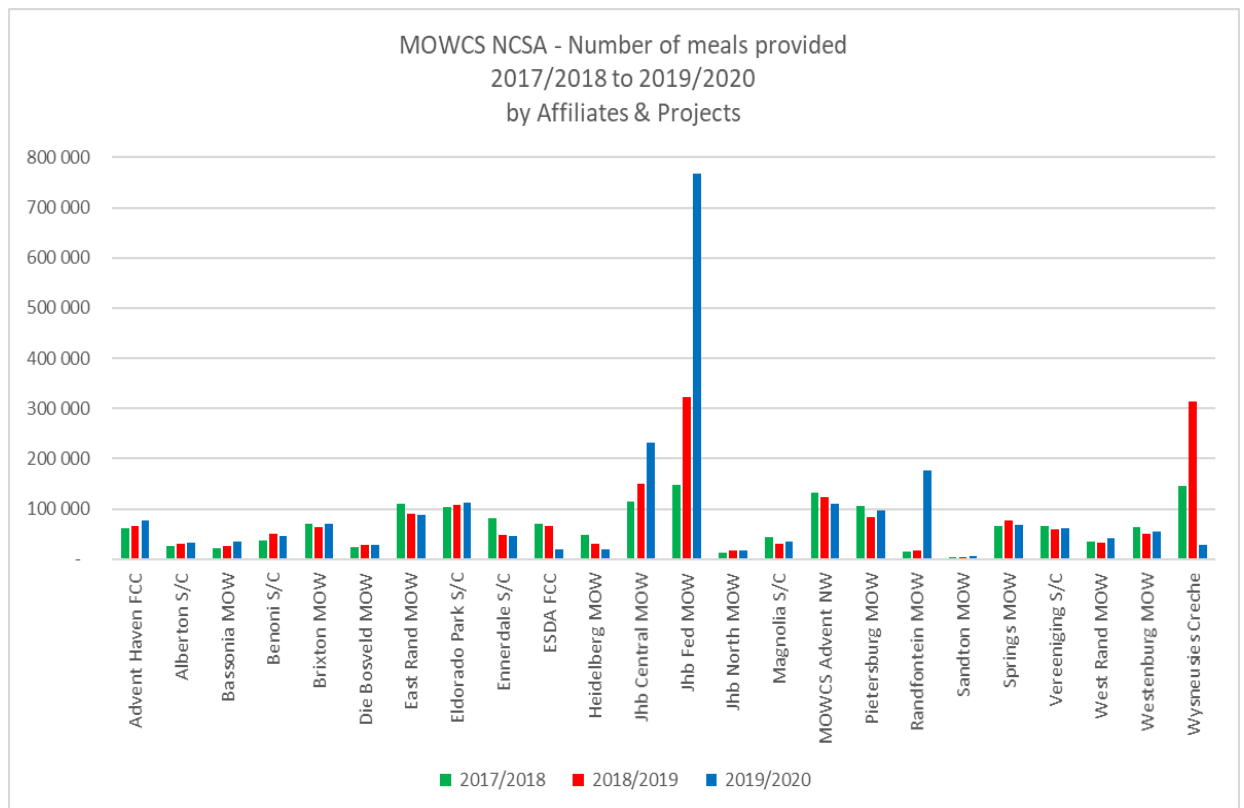
FRONT:

Norah Zwane – Accounts Clerk/Receptionist
Elizabeth Jansen van Rensburg – Accountant
Patrick Modise – General Worker

Statistical Comparison – MOWCS NCSA Meals Provided



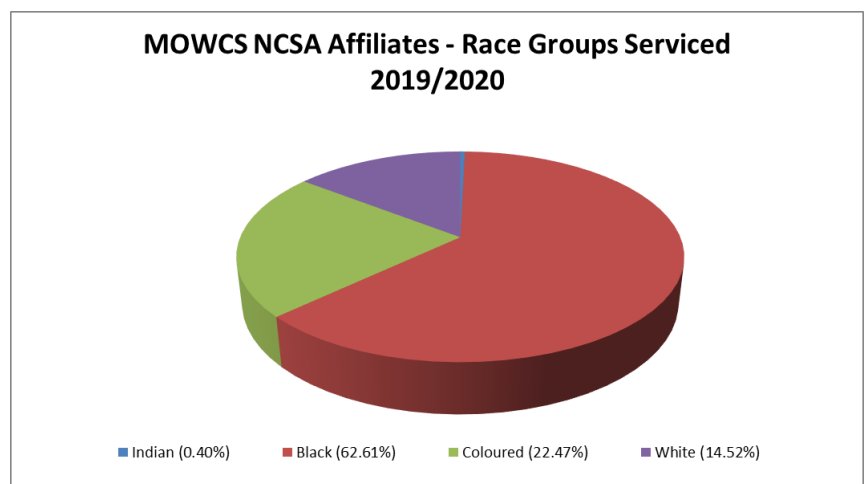
Statistical Comparison – Affiliates & Projects Meals Provided



Statistical Comparison – Affiliates & Projects Meals Provided (continue)

<i>Affiliate/ Project</i>	Actual Meals per Year		
	2017/2018	2018/2019	2019/2020
Advent Haven FCC	60 858	65 481	76 290
Alberton S/C	26 460	31 105	32 003
Bassonia MOW	20 906	25 965	34 953
Benoni S/C	36 556	51 027	45 853
Brixton MOW	71 200	63 960	69 361
Die Bosveld MOW	24 127	28 350	28 720
East Rand MOW	110 568	90 901	87 740
Eldorado Park S/C	103 588	106 968	112 173
Ennerdale S/C	80 643	47 825	46 808
ESDA FCC	69 429	65 023	18 786
Heidelberg MOW	47 542	31 496	19 325
Jhb Central MOW	114 568	150 555	232 890
Jhb Fed MOW	147 739	322 249	768 202
Jhb North MOW	13 306	17 035	16 820
Magnolia S/C	43 906	30 028	34 622
MOWCS Advent NW	131 565	122 817	109 495
Pietersburg MOW	106 316	82 684	96 147
Randfontein MOW	14 955	17 088	175 708
Sandton MOW	3 234	3 173	5 177
Springs MOW	66 839	76 585	67 916
Vereeniging S/C	65 817	60 294	60 636
West Rand MOW	35 354	32 201	42 137
Westenburg MOW	64 250	50 950	54 000
Wysneusies Creche	144 958	312 876	28 313
	1 620 685	1 886 636	2 264 075

Race Group Serviced



Basket of Services

Providing a meal to the poorest of the poor, which includes the vulnerable, disabled and elderly in society, is the first step in mobilizing these individuals for their daily activities. The basket of services which MOWCS NCSA affiliates and projects provide complements the meals. At present, the services provided focuses on the elderly in society. These services include:

- Devotional and spiritual services;
- Social activities;
- Basic medical services;
- Transport services;
- Home help services;
- Arts and crafts;
- Luncheon clubs;
- Income generating projects; and
- Christmas/Year end functions

COMMUNITY SERVICES & PARTNERSHIPS



Frontline Affiliates

Meals on Wheels Service Centers

Name	NPO No.	Manager (February 2020)
Alberton Service Centre & Meals on Wheels (Alberton & Thokoza)	002-712	Ms Zerie Wessels
Eldorado Park Service Centre & Meals on Wheels	011-601	Ms Belinda Ishmail
Ennerdale Service Centre & Meals on Wheels	002-753	Mr Cerrol Louw
Magnolia Haven Service Centre & Meals on Wheels	011-272	Ms Stefanie Bezuidenhout
Vereeniging Service Centre & Meals on Wheels	002-123	Ms Elize Williamson

Meals on Wheels Feeding Schemes

Name	NPO No.	Leader (February 2020)
Bassonia Meals on Wheels (Project)	002-707	Ms Veronese Els
Benoni Meals on Wheels	002-719	Ms Charlotte Vorster
Brixton Meals on Wheels	078-906	Mr Ignatius Zulu
East Rand Meals on Wheels (Reiger Park)	002-756	Ms Delphine Smithwick
Heidelberg Meals on Wheels (Project)	002-707	Ms Celie Delport
Johannesburg Central Meals on Wheels	115-174	Mr Miracle Mamombe
Johannesburg Federation Meals on Wheels (JHB South)	002-721	Ms Zwelakhe Lamula
Johannesburg North Meals on Wheels	002-718	Mr Gert van Deventer
Pietersburg Meals on Wheels Community Services	002-717	Ms Cheryl Gibson
MOWCS Advent NW (Potchefstroom) (Project)	002-707	Ms Corrie Matthyssen
Randfontein Meals on Wheels (Project)	002-707	Ms Lizzy Stevens
Sandton Meals on Wheels Community Services (Sandton, Randburg & Alexandra)	011-573	Ms Gift Sikazwe
Springs Meals on Wheels	002-716	Ms Daleen Enslin-Strydom
Westenburg Meals on Wheels & Community Services (Polokwane)	075-382	Ms Irene Mathye
West Rand Meals on Wheels & Community Services (Bosmont/Westburg/Riverlea/Noordgesig)	002-722	Ms Wendy Schofield
Wysneusies Pre-School (Pretoria)	002-759	Mr Christo Kritzinger

While the MOWCS NCSA Area Office has been operational for 39 years, many affiliates have been operating for decades too, some even prior to the formalization of the Area Office, reflecting the dedication and commitment from the Seventh-day Adventist church members who minister to the needy in our communities.

Name	Year Operations Commenced	Years in Operation
Alberton Service Centre & MOW	1980	40 years
Bassonia MOW (initially under Southern Suburbs SDA Church)	1985	35 years
Benoni MOW	1973	47 years
Benoni Service Centre	1987	33 years
East Rand MOW	1982	38 years
Eldorado Park MOW	1982	38 years
Eldorado Park Service Centre	1987	33 years
Ennerdale Service Centre	1987	33 years
Heidelberg MOW	1999	21 years
Jhb Central MOW	1996	24 years
Jhb Fed MOW	1961 / 1963	57/59 years
Magnoliahaven MOW	1965	55 years
Magnoliahaven Service Centre	1980	40 years
MOWCS Advent NW (Potch)	2003	17 years
Pietersburg MOW	1973	47 years
Sandton MOW	1986	34 years
Springs MOW	1973	47 years
Vereeniging MOW	1973	47 years
Vereeniging Service Centre	1986	34 years
West Rand MOW	1975	45 years

Tunnel Partner

Vegetable tunnels in partnership with Farming against Hunger & Curro Heuwelkruin (Polokwane)

Already delivering and supporting Pietersburg and Westenburg Meals on Wheels



Water Project

Profit (2019/2020)-R 378,20



Toilet Paper Project

Profit (2020/2021)

calc. September 2020-R 1 225,24



Spinning Challenge

Set for 2 December 2020 @ Planet Fitness in Lakeside, Benoni

Planned for 11h00

Target - Home executives

Entry fee R120-00 per person

Spin time – 50 minutes

Covid rules apply



Covid-19

Covid-19 Pandemic dominated our outreach, our approach to service delivery and our sponsorships

The Area Office secured food supply in support of all our Affiliates and assistance from MOWCS SA



Golf day - 3 February 2021

- Venue: Heidelberg Golf Club
- Entry fee - R250 pe person
- Trophies first three positions
- Start 10h00 (Shot gun start)

Future Projects

- Vegetable tunnels at Sedaven
- Selling diesel fuel - we have an underground tank already

MOWCS NCSA Income Breakdown

Income Description	Total Income	% of Total Income
Earned Income	R 542 371.02	8.72%
Public Donations	R 764 126.57	12.28%
Hearts for Hunger	R 7 430.00	0.12%
PFR Income	R 1 241 942.87	19.96%
NCSA Appropriation	R 600 000.00	9.64%
U-Care	R 6 282.00	0.10%
EasyPay	R 2 410.00	0.04%
Fund Raising Projects	R 14 756.25	0.24%
MOWCS SA Meal Subs	R 2 876 362.13	46.22%
MOWCS SA 5% Admin Fee	R 167 284.21	2.69%
	R 6 222 965.05	100%

Public Funding
Our Life **Blood**



Funding

Affiliate / Projects Income Breakdown

Affiliate / Project	Earned Income	Government Subsidy	Own Funds Raised	Donations in Kind	MOWCS SA
Alberton S/C	25.98%	44.99%	9.56%	3.77%	15.70%
Bassonia MOW	0.00%	0.00%	49.71%	12.43%	37.86%
Benoni S/C	43.49%	0.00%	29.27%	3.47%	23.77%
Brixton MOW	0.00%	0.00%	0.24%	0.00%	99.76%
East Rand MOW	4.29%	0.00%	22.99%	1.16%	71.56%
Eldorado Park S/C	0.02%	45.12%	22.35%	3.21%	29.29%
Ennerdale S/C	2.13%	29.93%	10.81%	15.97%	41.16%
Heidelberg MOW	2.54%	0.00%	28.00%	12.46%	57.01%
JHB Central MOW	0.00%	0.00%	0.00%	0.00%	100.00%
JHB Fed South MOW	2.58%	0.00%	22.24%	0.00%	75.18%
JHB North MOW	8.52%	0.00%	74.63%	0.48%	16.38%
Magnolia S/C	37.22%	0.00%	59.17%	0.00%	3.61%
Magnolia Housing	100.00%	0.00%	0.00%	0.00%	0.00%
MOWCS Advent North West	0.00%	0.00%	11.22%	0.00%	88.78%
Pietersburg MOW	0.00%	0.00%	49.86%	24.19%	25.95%
Randfontein MOW	0.01%	0.00%	8.68%	42.34%	48.97%
Sandton MOW	29.81%	0.00%	25.37%	6.28%	38.54%
Springs MOW	27.34%	0.00%	19.79%	19.40%	33.48%
Vereeniging S/C	6.91%	54.84%	31.04%	0.00%	7.21%
West Rand MOW	1.78%	0.00%	81.82%	0.64%	15.76%
Westenburg MOW	0.00%	0.00%	31.64%	26.36%	42.00%
Wysneusies Crèche	98.41%	0.00%	0.00%	0.00%	1.59%



Year End Functions

- Number of Christmas Meals prepared for Seniors

4,350

- Number of meals served at Christmas parties for impoverished children

3,839

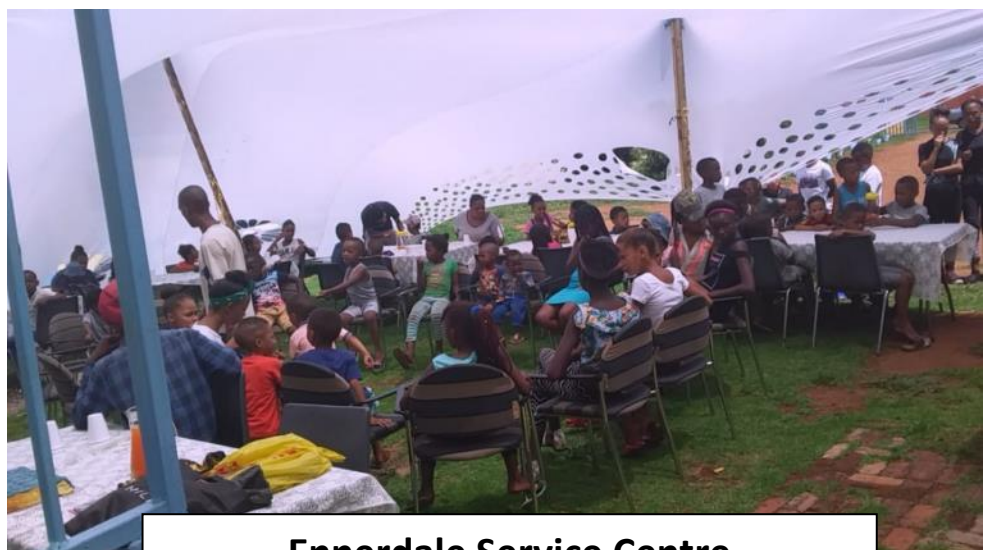
- Number of parcels handed out at Christmas time

1,944 single hampers

1,148 double hampers



Westenburg Meals on Wheels



Ennerdale Service Centre

Ms. Charlotta Crow, Senior Accountant.



We said goodbye to someone who made a real impact in this organization with his expertise and dedication.

Mr. E Jansen was a member of the NCSA Management Committee and Chairperson of its Finance Sub Committee. He sadly had to resign because of his fast declining health.

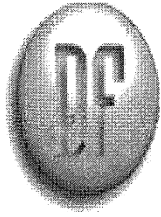
We as MOWCS NCSA thank him for the many years of service. May God continue to bless him

MEALS ON WHEELS COMMUNITY SERVICES, NCSA

Annual Financial Statement for the year ended 28 February 2020

STATEMENT OF COMPREHENSIVE INCOME FOR THE YEAR ENDED 28 FEBRUARY 2020

	Notes	2020 R	2019 R	2018 R
Revenue		549 469	500 754	426 966
Administation and Operating Cost		(5 622 615)	(5 270 448)	(5 679 748)
Operating Surplus / (Shortfall)		(5 073 146)	(4 769 693)	(5 252 782)
Other Income		5 707 419	4 565 984	4 470 601
Net Surplus / (Shortfall) for the Year		634 273	(203 709)	(782 181)



DFVANTONDER
ODDITEURE

Wag-'n-Bietjieweg 519 Wag-'n-Bietjie Ave
Magalieskruin
0159
Posbus/P.O. Box 15897
Sinoville
0129
Tel: (012) 548 0926
Faks: 086 675 0535
Sell/Cell: 082 878 2106

**REPORT OF THE INDEPENDENT AUDITOR TO THE MANAGEMENT COMMITTEE OF
MEALS ON WHEELS COMMUNITY SERVICES
NORTHERN CONFERENCE SA**

We have audited the accompanying financial statements of Meals on Wheels Community Services Northern Conference SA, which comprise the statement of financial position as at 29 February 2020, and the statement of comprehensive income, statement of changes in equity and statement of cash flows for the year then ended, and a summary of significant accounting policies and other explanatory notes.

Management's Responsibility for the Financial Statements

Management is responsible for the preparation and fair presentation of these financial statements in accordance with International Financial Reporting Standards for SME's. This responsibility includes: designing, implementing and maintaining internal control relevant to the preparation and fair presentation of financial statements that are free from material misstatement, whether due to fraud or error; selecting and applying appropriate accounting policies; and making accounting estimates that are reasonable in the circumstances.

Auditor's Responsibility

Our responsibility is to express an opinion on these financial statements based on our audit. We conducted our audit in accordance with International Standards on Auditing. Those standards require that we comply with ethical requirements and plan and perform the audit to obtain reasonable assurance whether the financial statements are free from material misstatement.

An audit involves performing procedures to obtain audit evidence about the amounts and disclosures in the financial statements. The procedures selected depend on the auditor's judgment, including the assessment of the risks of material misstatement of the financial statements, whether due to fraud or error. In making those risk assessments, the auditor considers internal control relevant to the entity's preparation and fair presentation of the financial statements in order to design audit procedures that are appropriate in the circumstances, but not for the purpose of expressing an opinion on the effectiveness of the entity's internal control. An audit also includes evaluating the appropriateness of accounting policies used and the reasonableness of accounting estimates made by management, as well as evaluating the overall presentation of the financial statements.

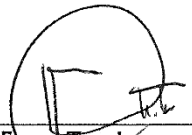
We believe that the audit evidence we have obtained is sufficient and appropriate to provide a basis for our audit opinion.

Opinion

In our opinion, the financial statements present fairly, in all material respects, the financial position of Meals on Wheels Community Services Northern Conference SA as at 29 February 2020, and of its financial performance and its cash flows for the year then ended in accordance with International Financial Reporting Standards for SME's.

Without qualifying our opinion, we draw attention to the fact that in common with similar organizations it is not feasible for the association to institute accounting controls over cash collections prior to initial entry of the collections in the accounting records. Accordingly it was impracticable for us to extend our examination beyond receipts actually recorded.

PRETORIA
16 JULY 2020


DF van Tonder
Chartered Accountant CA(SA)
Registered Auditor

MEALS ON WHEELS COMMUNITY SERVICES, NCSA
Annual Financial Statement for the year ended 28 February 2020

DETAILED STATEMENT OF COMPREHENSIVE INCOME FOR THE YEAR ENDED 28 FEBRUARY 2020

Notes	2020 R	2019 R
REVENUE		
Affiliates Admin Fees	327 755	327 755
Interest Received	61 516	37 003
Sundry and Rental Income	160 198	135 996
	<u>549 469</u>	<u>500 754</u>
OTHER INCOME		
Donations - Hearts for Hunger	7 430	6 720
Miscellaneous Donations	780 594	65 622
MOWCS SA 5% Admin Subsidy	167 284	135 367
MOWCS SA Christmas Dinners	250 000	280 000
MOWCS SA Subsidy	2 626 362	2 176 611
NCSA Appropriation	600 000	230 000
PFR Income	1 241 943	1 414 435
	<u>5 673 613</u>	<u>4 308 755</u>
INCOME	<u>6 223 082</u>	<u>4 809 509</u>
LESS: ADMINISTRATION AND OPERATING COST		
DOMESTIC EXPENDITURE		
Committee Expenses	893	1 097
Functions Office	1 424	4 774
Uniform and Linen	323	440
	<u>2 640</u>	<u>6 311</u>
LAND AND BUILDINGS		
Grounds Maintenance / Development	2 889	3 699
Municipal Services	105 646	73 716
Personnel Housing Maintenance	900	-
Repairs and Maintenance	8 036	13 201
	<u>117 471</u>	<u>90 616</u>
PROFESSIONAL AND SPECIAL SERVICES		
Audit Fees	12 625	17 200
Bank Charges and Interest	38 978	23 255
Other Professional Services	41 566	41 137
	<u>93 169</u>	<u>81 592</u>
TRANSPORT AND OFFICE EXPENDITURE ADMIN		
Insurance Building / Equipment	14 234	13 372
Subsistence and Travel	235 968	222 641
Telephone and Postage	29 760	28 320
	<u>279 962</u>	<u>264 333</u>
TRANSPORT AND OFFICE EXPENDITURE CLIENT SERVICES		
Computer Expenses	7 099	5 857
Insurance Buildings / Equipment	18 324	18 707
Insurance Vehicles	16 642	15 481
Maintenance Equipment	22 589	73 933
Maintenance Vehicles	17	2 938
Office Expenses	7 876	4 993
Printing and Stationery	9 363	18 239
Subsistence and Travel	6 628	4 548
Telephone and Postage	33 257	36 355
Transport Fuel and Parking	12 657	9 543
Workmen's Compensation Levies	8 835	12 246
	<u>143 287</u>	<u>202 840</u>

MEALS ON WHEELS COMMUNITY SERVICES, NCSA
Annual Financial Statement for the year ended 28 February 2020

DETAILED STATEMENT OF COMPREHENSIVE INCOME FOR THE YEAR ENDED 28 FEBRUARY 2020

Notes	2020 R	2019 R
Continued....		
SUNDRY EXPENSES CLIENT SERVICES		
Christmas Dinner Expenses	244 336	280 000
HI Comebacks Affiliates	156	288
HI Comebacks Congregations	1 005	1 071
HI Special Projects	3 824	6 487
Meal Subsidies	1 838 664	1 487 681
PFR Comebacks Affiliates	341 183	413 237
Seminars	-	2 550
	2 429 168	2 191 314
SUNDRY EXPENSES ADMIN		
Depreciation	77 937	64 883
Worker's Special Travel	-	4 378
	77 937	69 261
SALARIES CLIENT SERVICES		
Education Allowances	-	2 484
Ex Gratia Bonusses	61 660	34 721
Insurances	4 200	4 200
Medical Subsidy	122 973	116 496
Pension / Retirement Benefits	139 471	127 612
Salaries and Wages	1 070 939	995 720
Travel Reimbursements	35 436	32 975
Unemployment Insurance	9 699	9 332
	1 444 378	1 323 540
SALARIES COLLECTORS		
PFR Commissions	253 934	314 351
PFR Project Expenses	13 067	13 947
	267 001	328 298
SALARIES ADMIN STAFF		
Education Allowances	10 000	-
Ex Gratia Bonusses	28 965	16 631
Insurances	1 400	1 400
Medical Subsidies	98 374	94 899
Pension / Retirement Benefits	75 053	67 869
PQ Allowances	8 208	7 860
Salaries and Wages	537 120	515 664
Travel Reimbursements	4 914	4 449
Unemployment Insurance	3 569	3 569
	767 603	712 341
ADMINISTRATION AND OPERATING COST	(5 270 448)	(5 270 448)
NON OPERATING INCOME		
Capital Income / (Expenditure)	33 806	257 229
	33 806	257 229
NETT SURPLUS / (SHORTFALL) - For the Year	634 273	(203 709)

**MOWCS NCSA
PROPOSED BUDGET
2020/2021**

	Annual Budget 2019/2020	Actual 2019/2020	Annual Budget 2020/2021	Month Budget 2020/2021	
EARNED INCOME					
S-10 Earned Income	560 436	542 215.73	663 756	55 313	18%
TOTAL : EARNED INCOME	560 436	542 215.73	663 756	55 313	18%
OPERATING EXPENSES					
ADMIN					
S-11 Admin Salaries	729 732	755 580.40	769 260	64 105	5%
S-12 Admin Transport & Office Expenditure	283 368	283 203.17	284 760	23 730	0%
S-13 Admin Land & Building	85 596	117 245.95	120 096	10 008	40%
S-14 Admin Domestic	1 200	892.61	1 200	100	0%
S-15 Admin Professional Services	82 824	93 510.84	84 624	7 052	2%
S-16 Admin Sundries	79 944	77 937.01	77 748	6 479	-3%
TOTAL : ADMIN EXPENSES	1 262 664	1 328 369.98	1 337 688	111 474	6%
CLIENT SERVICES					
S-17 Client Salaries	1 378 560	1 444 299.47	1 450 932	120 911	5%
S-18 Client Transport	132 060	140 449.84	144 552	12 046	9%
S-19 Client Domestic	2 220	1 747.00	1 440	120	-35%
S-20 Client Sundries	2 192 664	2 431 233.61	2 461 080	205 090	12%
TOTAL : CLIENT SERVICES	3 705 504	4 017 729.92	4 058 004	338 167	10%
PROFFESIONAL FUND RAISERS					
S-21 PFR Salaries	325 176	268 723.93	260 160	21 680	-20%
S-22 PFR Transport & Administrative	-	-117.00	-	-	0%
TOTAL : PFR	325 176	268 606.93	260 160	21 680	-20%
TOTAL : OPERATING EXPENSES	5 293 344	5 614 706.83	5 655 852	471 321	7%
OPERATING LOSS BEFORE DONATION	-4 732 908	-5 072 491.10	-4 992 096	-416 008	5%
OPERATING APPROPRIATIONS					
S-10a DONATED INCOME					
Xmas dinners	280 008	250 000.00	252 000	21 000	-10%
Miscellaneous Donations	65 604	756 805.59	44 964	3 747	-31%
HI National Campaign	-	-	-	-	0%
MOWCS SA Meal Subsidy	2 178 000	2 606 730.08	2 652 768	221 064	22%
MOWCS SA 5% Admin Costs	136 800	165 231.21	164 400	13 700	20%
Hearts for Hunger	6 720	7 430.00	20 004	1 667	198%
PFR Income	1 431 024	1 241 762.82	1 234 800	102 900	-14%
Donation U Care	6 960	6 307.00	6 600	550	-5%
EasyPay Donations	1 800	2 410.00	2 160	180	20%
Fundraising Projects	25 992	11 942.25	14 400	1 200	-45%
Insurance Payouts	-	6 980.98	-	-	0%
NCSA Appropriation	600 000	600 000.00	600 000	50 000	0%
TOTAL : APPROPRIATIONS	4 732 908	5 655 599.93	4 992 096	416 008	5%
TOTAL : OPERATING INCOME	5 293 344	6 197 815.66	5 655 852	471 321	7%
Operating Gain/Loss	-	583 108.83	-	-	



Support Benefactors



MOWCS NCSA – Northern Area of South Africa
 North West, Gauteng, Limpopo & Mpumalanga Provinces

*Owned and Operated by the
 SDA Church Northern Conference South Africa*



Area Office

IC Grobler
 Area Director



CJ Crow
 Senior Accountant

Physical Address:	Postal Address:	Contact:
Protea Park Sedaven	P O Box 687 Heidelberg	Tel: 016 342-0309/10 Fax: 016 342 0307

National Office

National Director: Vacant
 National Finance Director: Effort Bhebe
 National Programmes Director: Gershon Naidoo

2 Link Road
 Naval View
 Bloemfontein